

Soft breezes and streaming sunlight dance along the edge of a tiny island.

Surrounded by Caribbean-blue waters and a charming neighborhood atmosphere, it is a new day at Alana, a stylishly chic residential haven of only seven floors and 30 boutique residences in an upscale location known only to locals and insiders.

ORAL REPRESENTATIONS CANNOT BE RELIED UPON AS CORRECTLY STATING THE REPRESENTATIONS OF THE DEVELOPER. FOR CORRECT REPRESENTATIONS, MAKE REFERENCE TO THIS BROCHURE AND TO THE DOCUMENTS REQUIRED BY SECTION 718.503, FLORIDA STATUTES, TO BE FURNISHED BY A DEVELOPER TO A BUYER OR LESSEE.





An Escape All Its Own

With a striking curvilinear design that echoes Miami's Art Deco legacy, and an elegantly modern low-rise façade, Alana captures the essence of what it means to call Bay Harbor Islands home. This is life as it should be – close to beaches, city skyline views, a quiet island mood, designer interiors, impeccable amenities, all in a home that celebrates the indoor-outdoor lifestyle for which the area is famous.



An Elevated Island Home

Carefree living, inspired design, and quality craftsmanship all come together at Alana. Brand-new construction, high-end materials and finishes, and flawless attention to detail are clear from the first glimpse of the property and extend to every element of the building and residences. This creates a home that is not only beautiful to look at, but also intensely enjoyable to own.

Effortless

A sense of chic comfort moves throughout every space at Alana, creating a home-like feeling that is always pleasant and welcoming.



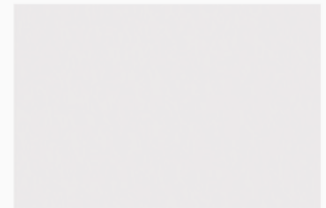
Designed by Experts in Distinction

The concept behind Alana has been brought to life by a team of recognized leaders in their respective fields. The undulating minimalist design and sinuous glass shape of the building is the work of Revuelta Architecture International, the world-renowned firm behind iconic residences in countries around the globe.

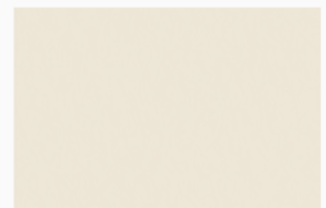
Together, the result is artistry layered upon artistry – and a residential address unlike any other in South Florida.



ALANA COLOR
PALETTE



morning dew



warm cream



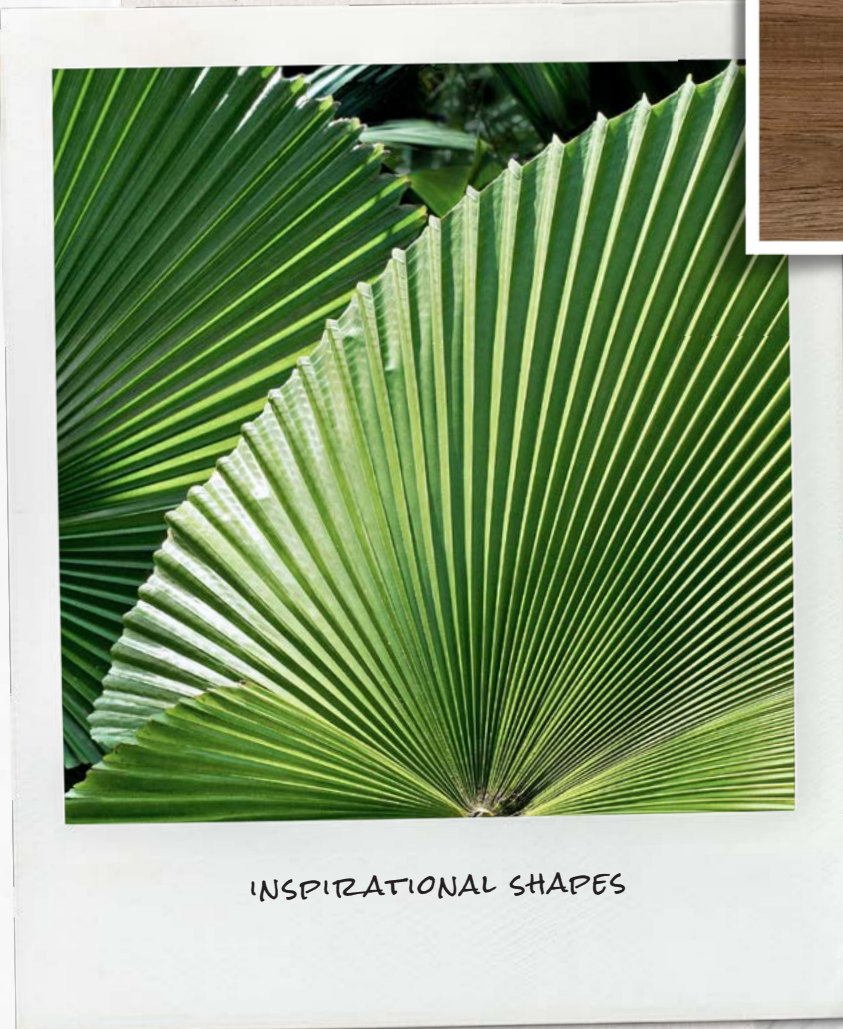
warm copper



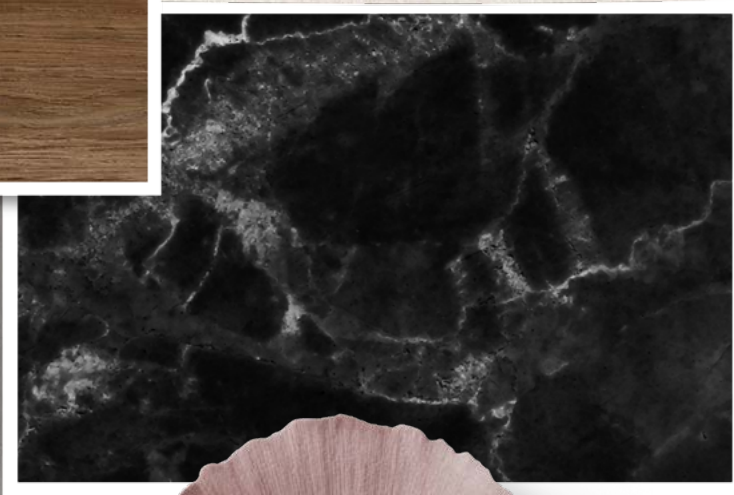
winter flannel



midnight sky



INSPIRATIONAL SHAPES



SOFT
NATURAL
MATERIALS



DESIGNED
WITH
NATURE
IN MIND





ALL ILLUSTRATIONS ARE ARTISTIC CONCEPTUAL RENDERINGS AND ARE SUBJECT TO CHANGE WITHOUT NOTICE.

Elevated Living. Everyday.

A thoughtfully curated array of amenities reflects the personalized, boutique aspect of Alana – all executed with exceptional attention to detail and upscale enjoyment.

- 360-degree Rooftop Oasis for outdoor enjoyment
- Rooftop swimming pool and jacuzzi
- Outdoor yoga/meditation space
- Fully outfitted fitness center with cardio and weight training equipment
- Resident's social room, large screen television and lounge seating perfect for events or meetings of any kind



On Top of Your World

The Alana Rooftop Oasis overlooks perfection in all directions, with rooftop views of Miami and Bay Harbor Islands.

ALL ILLUSTRATIONS ARE ARTISTIC CONCEPTUAL RENDERINGS AND ARE SUBJECT TO CHANGE WITHOUT NOTICE.

Your Rooftop Retreat

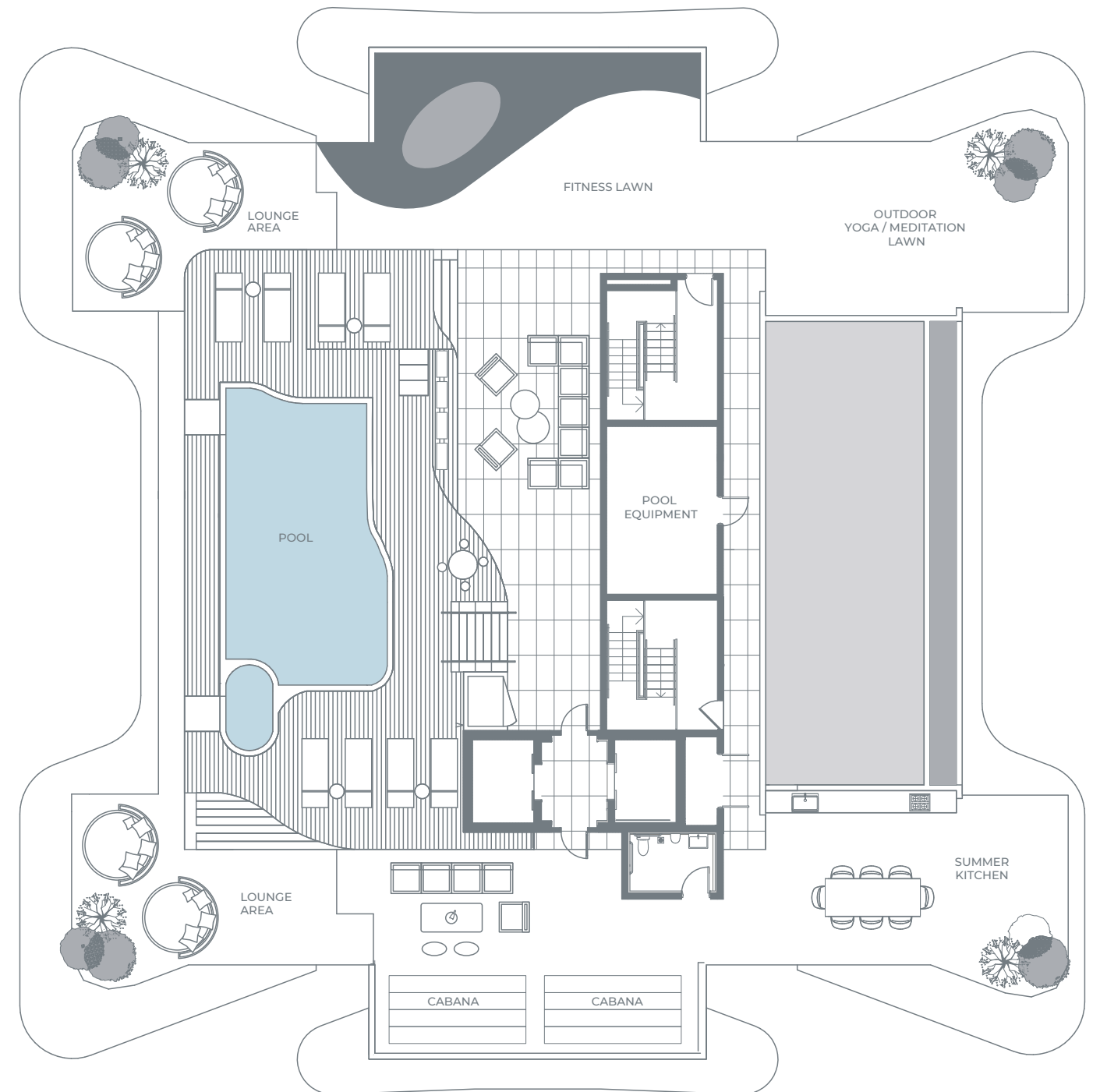
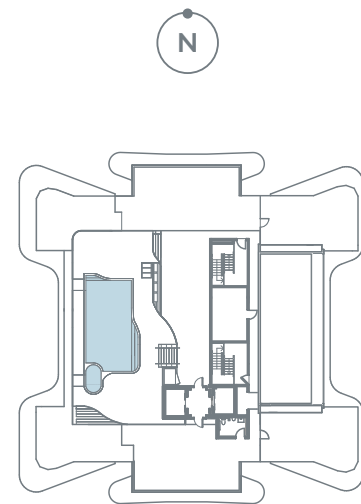
Swim or sunbathe, toast the sunset, relax or play, or laugh and socialize – it all happens from the 8th Floor Rooftop area created exclusively for Alana residents and their utmost enjoyment.



ALL ILLUSTRATIONS ARE ARTISTIC CONCEPTUAL RENDERINGS AND ARE SUBJECT TO CHANGE WITHOUT NOTICE.

The Alana Rooftop Oasis

- Open-air Sky Lounge
- Summer kitchen for outdoor meals with family and friends
- Resort syle pool and built-in deck-level whirlpool
- Sundeck with water and skyline views
- Chic lighting, shade areas, and garden spaces for maximum comfort both day and night
- Zen-like garden space for meditation or yoga
- Outdoor fitness area



ORAL REPRESENTATIONS CANNOT BE RELIED UPON AS CORRECTLY STATING REPRESENTATIONS OF THE DEVELOPER. FOR CORRECT REPRESENTATIONS, MAKE REFERENCE TO THE DOCUMENTS REQUIRED BY SECTION 718.503, FLORIDA STATUTES, TO BE FURNISHED BY A DEVELOPER TO A BUYER OR LESSEE. ALANA BAY HARBOR ISLANDS CONDOMINIUM IS DEVELOPED BY ALTA BAY HARBOR 1 LLC. STATED SQUARE FOOTAGES AND DIMENSIONS ARE MEASURED TO THE EXTERIOR BOUNDARIES OF THE EXTERIOR WALLS AND THE CENTERLINE OF INTERIOR DEMISING WALLS AND IN FACT VARY FROM THE SQUARE FOOTAGES AND DIMENSIONS THAT WOULD BE DETERMINED BY USING THE DESCRIPTION AND DEFINITION OF THE "UNIT" SET FORTH IN THE DECLARATION (WHICH GENERALLY ONLY INCLUDES THE INTERIOR AIRSPACE BETWEEN THE PERIMETER WALLS AND EXCLUDES ALL INTERIOR STRUCTURAL COMPONENTS AND OTHER COMMON ELEMENTS WITHIN THE PERIMETER WALLS OF THE UNIT). THE DIMENSIONS STATED FOR THIS UNIT FLOOR PLAN ARE APPROXIMATE BECAUSE THERE ARE VARIOUS RECOGNIZED METHODS FOR CALCULATING THE SQUARE FOOTAGE OF A UNIT. THE SQUARE FOOTAGE STATED HERE IS CALCULATED FROM THE EXTERIOR BOUNDARIES OF THE EXTERIOR WALLS TO THE CENTERLINE OF INTERIOR DEMISING WALLS WITHOUT DEDUCTIONS FOR CUTOUTS, CURVES, OR ARCHITECTURAL FEATURES. THIS METHOD TYPICALLY RESULTS IN QUOTED DIMENSIONS GREATER THAN THE DIMENSIONS THAT WOULD BE DETERMINED BY USING OTHER ACCEPTED METHODS. THE DEFINITION OF "UNIT" AND THE CALCULATION METHOD TO BE RELIED UPON IS SET FORTH IN THE DEVELOPER'S PROSPECTUS AND THE METHOD SET FORTH IN THE DEVELOPER'S PROSPECTUS MAY RESULT IN A SQUARE FOOTAGE CALCULATION LESS THAN THE METHOD USED HERE. THE BALCONIES DEPICTED ARE CONCEPTUAL AND THE SIZE WILL VARY BASED FLOOR LEVEL OF UNIT, FINAL PERMITTING AND COMPLETED CONSTRUCTION. THE ILLUSTRATIONS AND IMAGES ARE CONCEPTUAL AND MAY VARY FROM CONCEPT TO ACTUAL CONSTRUCTION. THE FLOOR PLAN, UNIT LAYOUT, LOCATIONS OF WINDOWS, DOORS, CLOSETS, PLUMBING FIXTURES, MECHANICAL EQUIPMENT, APPLIANCES, STRUCTURAL ELEMENTS, ARCHITECTURAL DESIGN ELEMENTS, AND THE USES, CONFIGURATIONS, AND ENTRIES TO ROOMS MAY CHANGE BASED ON FINAL APPROVED PLANS, PERMITTING, AND COMPLETED CONSTRUCTION. THE FURNITURE PLAN AND THE USES OF SPACE ILLUSTRATED ARE SUGGESTED USES ONLY AND NOT INTENDED TO GUARANTY OR REPRESENT ANY SPECIFIC USE OF SPACE. FURNISHINGS, DESIGN FEATURES, FIXTURES, AND DÉCOR ILLUSTRATED ARE CONCEPTUAL AND ARE NOT INCLUDED WITH PURCHASE OF A UNIT. CONSULT THE DEVELOPER'S PROSPECTUS FOR INFORMATION ON WHAT IS OFFERED WITH THE UNIT AND THE CALCULATION OF THE UNIT SQUARE FOOTAGE AND DIMENSIONS. © 2022 WITH ALL RIGHTS RESERVED ALTA BAY HARBOR 1 LLC.

Life feels easier here. A calm and relaxed mood blends seamlessly with contemporary design and impeccable finishes. It is a place for people who enjoy the elegance of simplicity.





Welcome to Open Concept at Its Finest

Ample natural light, breathtaking views flow effortlessly across every room, while quality materials and construction frame your residence in elegance.



ALL ILLUSTRATIONS ARE ARTISTIC CONCEPTUAL RENDERINGS AND ARE SUBJECT TO CHANGE WITHOUT NOTICE.



Building Features

- Seven-story boutique residential building designed by internationally acclaimed architectural firm, Revuelta Architecture International
- 30 two-bedroom and three-bedroom residences ranging from 1,229 to 1,662 sq ft
- Modern, minimalistic design with a glass exterior façade
- Lush gardens throughout the property
- High-speed Wi-Fi in all common areas

Residences Features

- Designer ready units
- Corner residences offer wrap-around terraces
- High impact floor-to-ceiling sliding glass doors and windows
- All bedrooms have access to expansive balconies
- Walk-in closets in master bedrooms
- Master bathroom with double sink, glass shower enclosure
- Expansive glass-framed outdoor terraces accessible from bedrooms and living areas
- Italian kitchens with custom quartz counter tops and Italkraft® cabinetry
- Bosch® appliance suite includes induction cooktop, built-in French door refrigerator, convection oven, microwave oven, and dishwasher
- Storage available on same level as residence



ALL ILLUSTRATIONS ARE ARTISTIC CONCEPTUAL RENDERINGS AND ARE SUBJECT TO CHANGE WITHOUT NOTICE.

An Owner's Escape

Graciously oversized, with floor-to-ceiling windows and a private entrance to the terrace, the Master suite feels like a secret retreat within each residence.

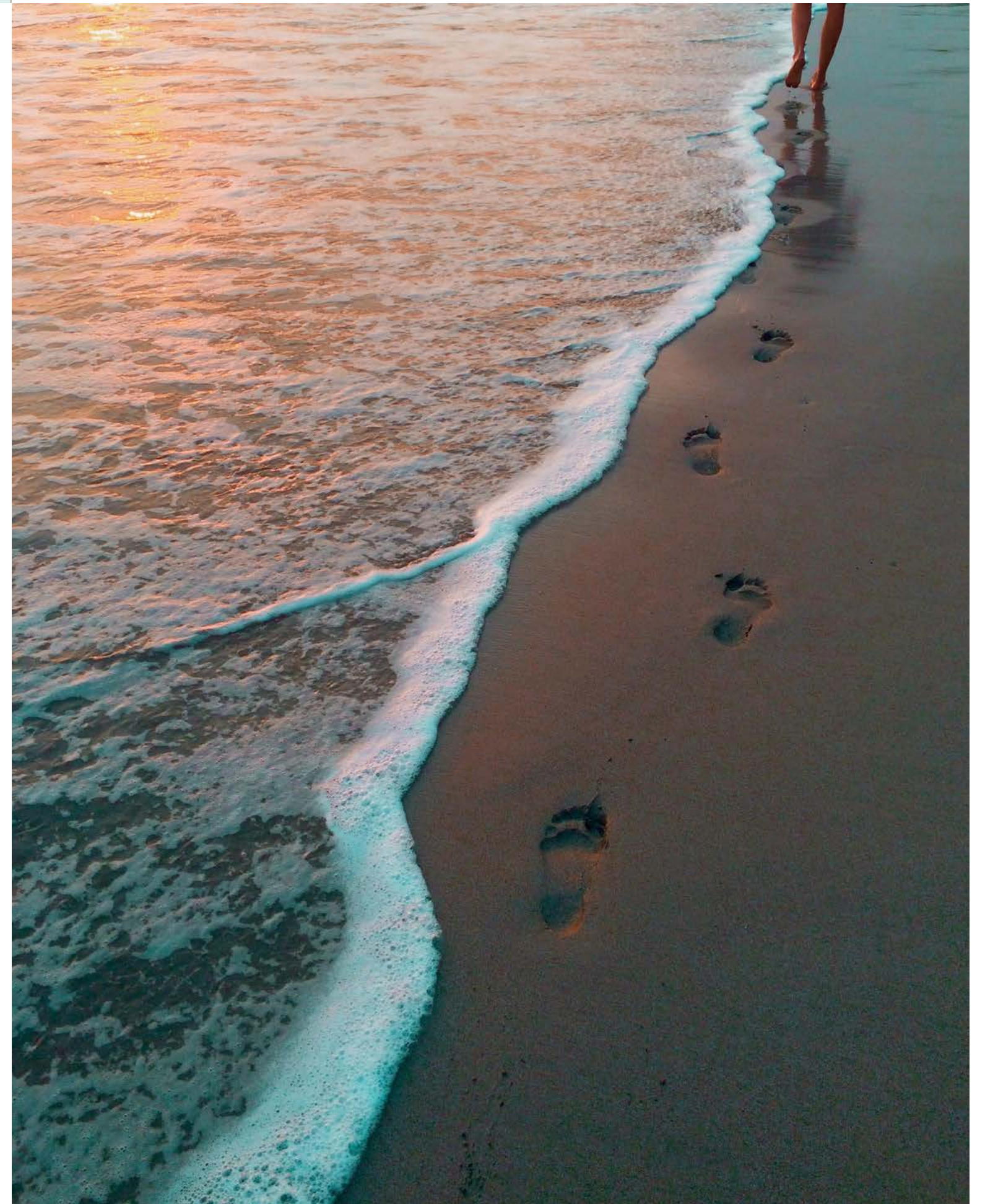
Your Own Modern Spa

Thick slab white-and-gray porcelain tile wraps the floors and wet walls of your master bath, with seamless shower enclosures, Italkraft® vanities, and minimalist designer fixtures.

ALL ILLUSTRATIONS ARE ARTISTIC CONCEPTUAL RENDERINGS AND ARE SUBJECT TO CHANGE WITHOUT NOTICE.



In all of South Florida, there is only one place where the sands of the Atlantic, charming neighborhood parks, local shops, and the glamour of Bal Harbor are all at your fingertips.

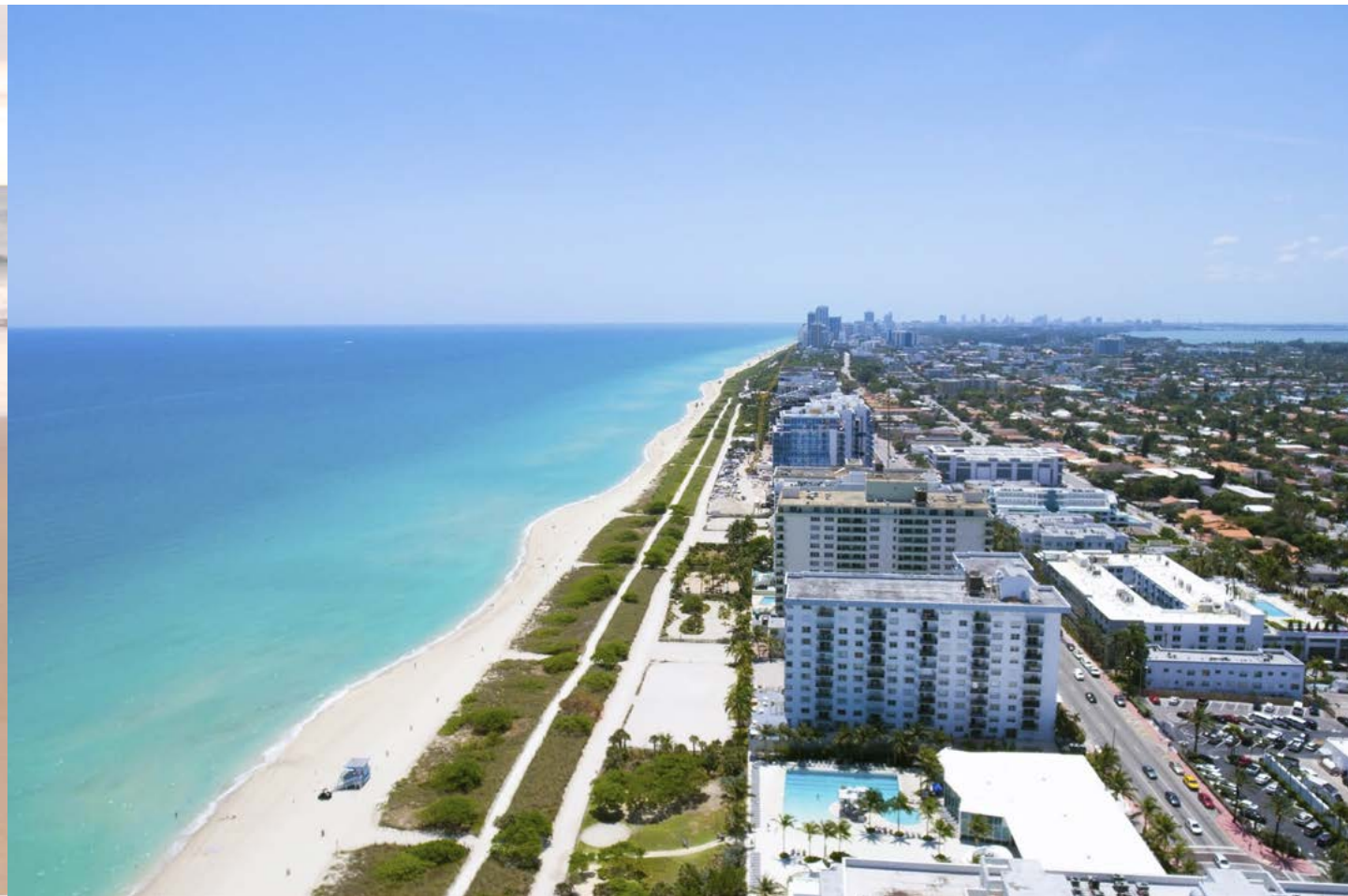


Boutique Bay Harbor

Bay Harbor Islands offers low-density living and a quiet neighborhood atmosphere that is peaceful to call home.



ALL ILLUSTRATIONS ARE ARTISTIC CONCEPTUAL RENDERINGS AND ARE SUBJECT TO CHANGE WITHOUT NOTICE



Excellence in Education

Families love Bay Harbor Islands because of its top-rated public school, the Ruth K Broad Bay Harbour K-8 Center – one of the best in the county year after year. The area also boasts a number of superior pre-schools, children's programs, parks and playgrounds, and year-round family activities and events.

Everything You Love... and Then Some

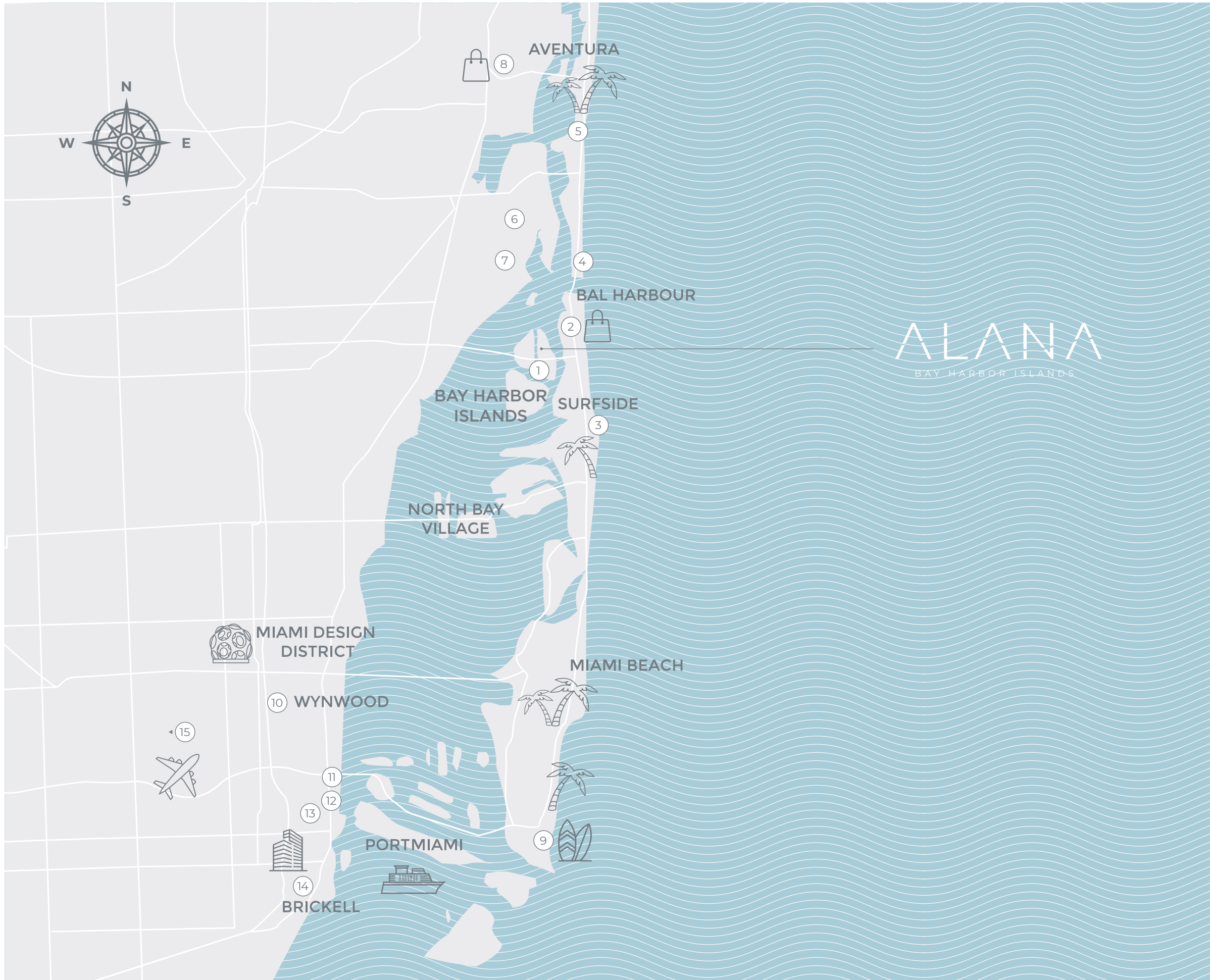
One of the best aspects of living in Bay Harbor Islands is the freedom to explore so many pleasures all just a few minutes from your front door. Alana is a short walk or bike ride to white-sand beaches, the world-famous Bal Harbour Shops, Haulover Inlet and Marina, and numerous local bistros and shops. Just a few minutes more by car, and the delights of Miami Beach, Aventura, and Sunny Isles Beach are yours as well.



Bal Harbour Shops

Just a short walk, you'll find one of the world's premiere destinations for fashion, food, and design. Bal Harbour shops has long been Miami's most elite shopping and entertainment experience – and at Alana, it is right there whenever you desire.





ALANA
BAY HARBOR ISLANDS

1. **Public School Ruth K, Broad Bay Harbor K-8** (2 min) (#2 in the ranking of public schools in Miami Dade County)
2. **Bal Harbour Shops Mall** (5 min)
3. **Surfside Beach** (6 min)
4. **Haulover Marina & Beach Park** (7 min)
5. **Sunny Isles Beach** (8 min)
6. **Oleta River State Park** (12 min)
7. **FIU Biscayne Bay Campus** (15 min)
8. **Aventura Mall** (20 min)
9. **South Beach** (25 min)
10. **Wynwood Walls** (30 min)
11. **Pérez Art Museum** (35 min)
12. **American Airlines Arena** (30 min)
13. **Downtown Miami** (30 min)
14. **Brickell Financial District** (30 min)
15. **Miami International Airport** (35 min)



ALANA
BAY HARBOR ISLANDS

ALL ILLUSTRATIONS ARE ARTISTIC CONCEPTUAL RENDERINGS AND ARE SUBJECT TO CHANGE WITHOUT NOTICE.



Alana is more than a building... it is a feeling of truly being at home. This is where you will make memories and create the story of your family, your friendships, your lifetime.

The Team



DEVELOPER

Alta Developers

Alta Developers is a South-Florida based real estate development firm, whose Principal & CEO Raimundo Onetto has been involved in some of the most noteworthy additions to the South Florida real estate landscape, with current projects such as Casa Bella Residences by B&B Italia, Crest at Pinecrest, EON SQUARED, Quadro Miami Design District, Vesta at Neovita Doral, and past projects such as Pacifica Boynton Beach, Neovita Doral, One Paraiso, Le Parc at Brickell, 900 Biscayne, Quantum on the Bay, and Metropolis at Dadeland, among others. These properties have been ahead of the curve from the start of each project often leading the way for future development in the areas and neighborhoods they occupy.



ARCHITECTURE

Revuelta Architecture International

Revuelta Architecture International, P.A. is a full-service architecture and planning firm, headquartered in historic Coconut Grove, FL. The firm's association with top local and national developers has resulted in the successful evolution of functionally sound and aesthetically significant projects in South Florida and beyond. A principal of Revuelta Architecture International, P.A., over the last 39 years Luis O. Revuelta, AIA, has overseen the design and coordination of some of the most significant mixed-use, urban developments in the area including Brickell Flatiron, the EPIC Residences & Hotel, Bristol Tower, the Santa Maria, Porto Vita-South, Porto Vita-North, The Bath Club, Azure, Jade Residences, Il Villaggio, and Grovenor House.

ALANA

BAY HARBOR ISLANDS



ORAL REPRESENTATIONS CANNOT BE RELIED UPON AS CORRECTLY STATING REPRESENTATIONS OF THE DEVELOPER. FOR CORRECT REPRESENTATIONS, MAKE REFERENCE TO THE DOCUMENTS REQUIRED BY SECTION 718.503, FLORIDA STATUTES, TO BE FURNISHED BY A DEVELOPER TO A BUYER OR LESSEE. Alana Bay Harbor Islands Condominium (the "Condominium") is developed by Alta Bay Harbor 1 LLC.

THESE MATERIALS ARE NOT INTENDED TO BE AN OFFER TO SELL, OR SOLICITATION TO BUY, A UNIT IN ALANA BAY HARBOR ISLANDS, A CONDOMINIUM (THE "CONDOMINIUM"). SUCH AN OFFERING SHALL ONLY BE MADE PURSUANT TO THE PROSPECTUS (OFFERING CIRCULAR) FOR THE CONDOMINIUM AND NO STATEMENTS SHOULD BE RELIED UPON UNLESS MADE IN THE PROSPECTUS OR IN THE APPLICABLE PURCHASE AGREEMENT. IN NO EVENT SHALL ANY SOLICITATION, OFFER OR SALE OF A UNIT IN THE CONDOMINIUM BE MADE IN, OR TO RESIDENTS OF, ANY STATE OR COUNTRY IN WHICH SUCH ACTIVITY WOULD BE UNLAWFUL. ALL BRANDS, APPLIANCES, FEATURES, DIMENSIONS AND AMENITIES DESCRIBED HEREIN ARE PROPOSED AND CONCEPTUAL ONLY, AND ARE BASED UPON PRELIMINARY DEVELOPMENT PLANS, WHICH ARE SUBJECT TO WITHDRAWAL, REVISIONS AND OTHER CHANGES, WITHOUT NOTICE, AS PROVIDED IN THE PURCHASE AGREEMENT AND THE PROSPECTUS. THEY SHOULD NOT BE RELIED UPON AS REPRESENTATIONS, EXPRESS OR IMPLIED, OF THE FINAL DETAIL OF THE PROPOSED IMPROVEMENTS, BRANDS, APPLIANCES, FEATURES, DIMENSIONS OR AMENITIES. STATED INFORMATION REGARDING NEARBY ATTRACTIONS, FACILITIES, SCHOOLS, PARKS, SHOPPING, AMENITIES, ETC., WHETHER EXISTING OR PROPOSED, IS BELIEVED ACCURATE AT TIME OF INITIAL PUBLICATION, HOWEVER THERE IS NO GUARANTEE THAT SAME WILL BE FULLY DEVELOPED OR CONTINUE TO EXIST OR THAT THERE WILL NOT BE CHANGES TO SAME.

Alana Bay Harbor Islands Condominium (the "Condominium") is developed by Alta Bay Harbor 1 LLC ("Developer") and you should rely only on the Developer's written representations. The illustrations and images are conceptual and may vary from concept to actual construction. The floor plan, unit layout, locations of windows, doors, closets, plumbing fixtures, mechanical equipment, appliances, structural elements, architectural design elements, and the uses, configurations, and entries to rooms may change based on final approved plans, permitting, and completed construction. The furniture plan and the uses of space illustrated are suggested uses only and not intended to guarantee or represent any specific use of space. Furnishings, design features, fixtures, and décor illustrated are conceptual and are not included with purchase of a Unit. There are water views, but the Condominium is not waterfront. Certain amenities and features may require additional expense by Unit owner. Consult only the Developer's Prospectus for the Condominium to learn terms, conditions, specifications, estimated costs, and what is included with a Unit purchase. The balconies depicted are conceptual and the size will vary based on final permitting and completed construction. Developer is not incorporated in, located in, nor a resident of, New York and this is not intended to be an offer to sell, or solicitation of an offer to buy, condominium units in New York or to residents of New York, or residents of any other jurisdiction where prohibited by law. Reproduction for any use is not authorized. 2022 © Alta Bay Harbor 1 LLC.

